



MALVERN COMMUNITY  
ARTS COUNCIL

# Annual Report 2021

17 South Terrace, Darfield 7510

P.O. Box 1, Darfield 7541

[www.malvernarts.org.nz](http://www.malvernarts.org.nz)

**Cover photo:**

*"Silver Daisies" Cathy Bell*

*Winner of the 2021 Darfield Artweek People's Choice Award*



*"Summer in the Plains"*

*Belinda Cullen-Reid*

# Contents

Welcome .....	3
Art in the Time of COVID-19 Year 2 .....	4
Selwyn Awards 2021 .....	5
Gallery Highlights .....	6
Pottery Workshop Weekend .....	8
Performing Arts .....	10
40 Years of Darfield Artweek .....	11
MCAC Administrator .....	14
Scholarships and Prizes .....	15
Health and Safety .....	17
Privacy Act Compliance .....	17
Volunteers .....	17
2021 Committees .....	18
Annual Accounts for the Year Ending 31 December 2021 .....	19

# Welcome



I am pleased to present the annual Chairperson's Report of the Malvern Community Arts Council for the year ending 31 December 2021.

As outgoing Chairperson of MCAC, I would like to offer my grateful thanks for your support in another year of unexpected challenges. An unforeseen COVID-19 lockdown in August–September, the very gradual loosening of restrictions that followed, and the spread of an omicron variant of the virus late in 2021 have not prevented us from fulfilling the primary purpose of the Malvern Community Arts Council: “To promote art and artists to the people of Selwyn”. We are thankful to our artist members and the communities in Selwyn that have supported us as we continue to develop, facilitate, and support local arts events and activities that our community can participate in and enjoy.

I would like to extend my thanks to all MCAC volunteers—our Executive, Gallery, Performing Arts, and Artweek Committees; the gallery volunteers who cheerfully greet visitors; and those who help with the setup and take down of Artweek and concert venues. Your continued participation in our work is invaluable. Your passion and dedication makes it possible for us to provide great art, cultural experiences, and engaging activities for the people of Selwyn.

A handwritten signature in black ink that reads "Philip Baldwin". The signature is written in a cursive style with a large initial 'P'.



# Te Huanui

Art Gallery in Darfield

## Art in the Time of COVID-19 Year 2

The Malvern Community Arts Council was optimistic at the beginning of 2021. In the autumn of 2020 we had shut down, and then re-opened, Te Huanui (along with the upset of cancelling two exhibitions), re-scheduled the AGM that had been postponed from mid-April, and lost a performance by the irrepressible Penny Ashton. We had been overwhelmed by the positive response to Darfield Artweek 2020, and expected a return to fairly normal operations. The walls in Gallery 1 had been given a fresh coat of paint, exhibitions were scheduled and artists lined up for the year, plans were being made for a pottery workshop weekend, Arts on Tour performances were booked, and the success of the previous Artweek gave us hope that our celebration of the 40th Darfield Artweek in 2021 would be a resounding success.

Details of some of these events are described here, while parts of our programme for 2021 needed serious adjustment. Our optimism and desire to see the success of our plans helped us to get through a year that certainly had its ups and downs.

Until August 2021 we were quite confident that the year would go well for us. A number of successful exhibitions, including a show of talented artists from Darfield High School, a well-supported Pottery Worship weekend, and a stunning performance by New Zealand songbird, Caitlin Smith, gave us hope for a “normal” year. That hope was dashed by the government’s country-wide move to Alert Level 4 in August that forced us to close Te Huanui on 18 August for four weeks.

Although we had hurriedly dismantled an exhibition that was on the gallery walls at the beginning of the 2020 lockdown, it seemed

prudent to react more slowly this time. As a result the “Crowd Pleasers” exhibition stayed up until the end of September, while the exhibition that had been planned for the Selwyn Artists’ Collective (SAC) in September was not hung. Our resourceful Arts Administrator, Katrina Ellis, with the help of SAC’s Co-chair, Soon-Lee Spicer, gathered a sizeable number of digital images from this “Connections” show, and featured a considerable number of the artworks online. As we discovered in 2020, there are still art lovers who are willing to buy art works from online exhibitions. Nevertheless, we also rescheduled a physical exhibition of the Collective’s work in our cash-and-carry Summer Exhibition.

With the relaxation of the government’s COVID-19 regulations, Te Huanui was able to re-open on 14 September. All gallery surfaces were cleaned, and new sign-in and sanitise notices were put in place. Volunteers were contacted re wearing a mask and asked to remind visitors also to wear a mask when they came into the gallery.

On 3 December, as a result of the transition to the so-called “Traffic Light System”, we evaluated the need for restrictions at the existing Orange setting and decided not to demand proof of vaccination status for entry into Te Huanui.

The Alert Level 2 restrictions on the South Island in 2021 affected our gallery attendance numbers, since we were closed for four

weeks in August and September. A continued reduction in our weekday opening hours contributed to lesser attendance at Te Huanui: approximately 2900 in 2021, while our average annual attendance since 2016 has previously been over 3900.

## Selwyn Awards 2021

We were surprised by an anonymous nomination for one of the the Selwyn District Council’s Arts, Culture and Heritage Awards as part of their annual





*"Midnight Aperture II"*  
Jane McCulla

celebration of important contributions to the life of our district.

Among a number of deserving candidates, the Malvern Community Arts Council received a Silver Award. Here is the summary statement from our application: "From its inception MCAC has continued to produce and promote a variety of arts, programmes, and cultural events too numerous to mention, giving residents of Malvern County and Selwyn District regular opportunities to experience the breadth of artistic endeavour available to New Zealanders, and fulfilling our mission: 'To promote art and artists to the people of Selwyn'."

## Gallery Highlights

Te Huanui continues to draw the majority of its exhibiting artists from residents of Selwyn District. Our exhibitions included works by a wide range of stylistically engaging artists, including painters, photographers, potters, printmakers, and members of the Selwyn Artists Collective. The routine of taking down and packing one exhibition and hanging the next one on a monthly basis is handled very efficiently by **Meg Morten**, the Gallery Committee Chair, and our Arts Administrator, Katrina Ellis. In addition, committee members attend openings, and are part of the



committed group of volunteers that work to keep the gallery open and running. We are much indebted to the approximately forty-five volunteers who spend a few hours at the desk once (and sometimes twice) a month to keep Te Huanui open six days a



week. Special thanks also go to **Jane Duncan** for her cheerful and dedicated organisation of the volunteer roster for the gallery each month. The success of Gallery 2 as a venue for displaying and selling works from our artist members has continued. The 69 artists who paid membership fees in 2021 generated Gallery 2 sales exceeding \$14,700 for the year.

For our September exhibition, featuring works by members of the Selwyn Artists Collective, which could not be shown publicly, Katrina created an online exhibition for our website, which drew a respectable number of views, as well as generating some sales.

MCAC is thankful to have an excellent relationship with Orion, the owner of the building which houses Te Huanui. With their approval Te Huanui now has a fibre internet connection, which was completed in May. Orion's continued support for MCAC and the arts in Selwyn is vital to our operations, and we are extremely grateful to the company for its generosity as a landlord.

We also greatly appreciate the support of Selwyn District Council through the Selwyn Event Fund, and its administration of Creative Communities NZ. Our storage container is located in the Council's storage yard on Mathias Street, providing us with secure storage space for our display screens, Artweek signage, and supplies that cannot be held at Te Huanui itself.





*Peter Cattell, local potter, demonstrates the shaping of clay on a potter's wheel.*

## Pottery Workshop Weekend

The weekend pottery workshop on Saturday–Sunday, 17–18 April grew out of the enthusiastic response to a day of “have a go” pottery making during our “Splash / Create” week the previous year. Under the guidance of local potters, Roger Chaplin, Allan Hooper, Bruce Munro, and Peter Cattell, 63 participants were able to use

one of four potter's wheels for at least 30 minutes each.



*Whitecliffs potter, Roger Chaplin, watches a novice potter shaping clay on a potter's wheel.*

Approximately a dozen family groups (one or more parents with children) took advantage of the workshop as a family outing, and a number of them took photos of the experience. Several parents commented particularly that they wanted to provide their child(ren) with just this sort of experience, but that there are very few opportunities to do so in the district.





*Bruce Munro, Kirwee potter, guides the shaping of clay on a potter's wheel.*



*Allan Hooper, also from Kirwee, gives some advice on the shaping of clay on a potter's wheel.*

The carpet in Te Huanui was covered in advance with durable protective plastic, and gallery volunteers assisted with registration for each participant. Of the 63 participants we were able to identify approximately half-a-dozen who had some direct connection with MCAC or the gallery. This means that we introduced at least 30 new individuals or families to the location and contents of Te Huanui gallery.



## Performing Arts

An appreciative audience of just fifty people experienced the supple voice and musical mastery of “Brave Caitlin Smith’s Imaginary Band” on Saturday, 22 May, at Trinity Church Darfield. Her command of jazz vocal technique shone through the whole performance—her own songs, as well as skillful covers of Leonard Cohen and Joni Mitchell, the singers she calls her “spiritual parents”.

“Brave Caitlin Smith’s Imaginary Band” is an oblique reference to her partial sight—she is legally blind—but it certainly hasn’t held her back. In fact, she was brave enough to step out

from behind the keyboard for her cover version of Joni Mitchell’s “Coyote”, and revealed her love of the music, not just in her singing, but in her unself-conscious, but very expressive, movements. Caitlin is definitely a taonga and one of NZ’s premiere entertainers.

For a second year in a row, Penny Ashton’s live performance in Darfield was cancelled. As all three performers in her “Austen Found: The Undiscovered Musicals of Jane Austen” show were Auckland residents at the time of the Alert Level 3 extension in early October, Arts on Tour NZ took the painful decision to cancel her New Zealand tour, which derailed our plans for a concert on 30 October.



The success of our 40th Darfield Artweek was immensely gratifying. Our canvassing for financial support from local and district businesses for Artweek awards raised \$6000 in spite of the extended 2021 Alert Level 2 uncertainty. A successful direct appeal to ex-MCAC volunteers to fund our 2021 Artweek Youth Category awards raised \$1400.

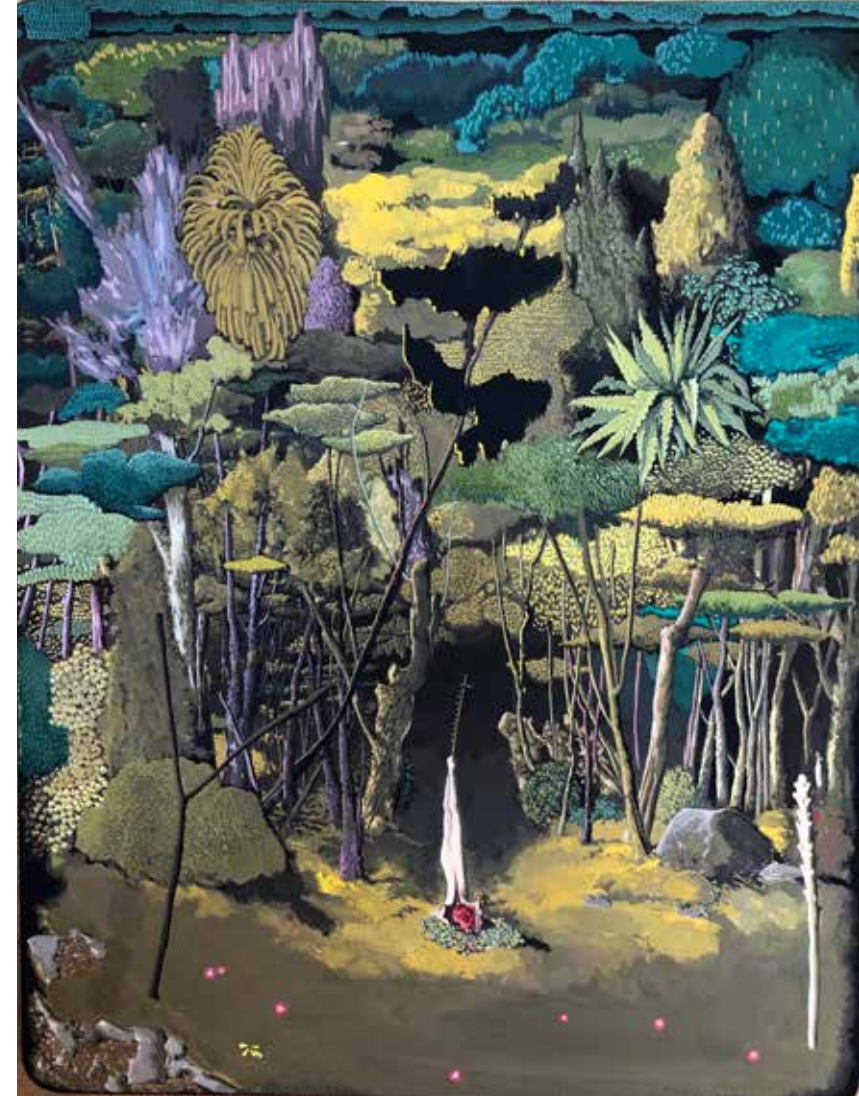
We were very thankful to all our artists, volunteers and supporters for their understanding of the need for Alert Level 2 compliance in attendance and food/drink service during Artweek. Our concerns about splitting the Opening into two parts were largely unfounded, as people found the supper room sit-down experience quite enjoyable both on Friday evening and Saturday morning.

Particular thanks go to our Artweek Committee for exemplary work in uncertain times: Meg Morten and Robin MacIntosh as Co-Chairs of the committee; Alastair Nicol and Lorraine Natusch for their diligent organisational work; Sylvia Townshend for organising the

**The MCAC  
Premiere Award,  
Artweek 2021**

*"Echoes"*  
Henry Turner

*"...a stirring and somewhat unexpected painting. This work is an outstanding example of imagination and careful use of technique. I really enjoyed spending time looking and discovering some hidden details. There is plenty to explore in the mark-making and the potential narrative, and one is left to meander and get lost in the imagery. Above all this artist has left a lasting impression on me..."*  
(Shirin Khosraviani, Artweek Judge 2021)





**The MCAC Friends Award, Artweek 2021**

*sponsored by Dee & Gerald Innes and Meg & Jim Morten*

*"In the Garden Shed" Mitsuyo Field*

*"...a serene and delicate, classic beauty. The work is a brilliant example of watercolour at its finest, and the artist has demonstrated a love for the medium by being restrained and celebrating the subject matter. I also appreciated the scale of this work in relation to the subject. Overall it was beautifully resolved."*

*(Shirin Khosraviani, Artweek Judge 2021)*

volunteer rosters, and including our Arts Administrator, Katrina Ellis, in the production of the catalogue. The committee's post-exhibition debrief continues to be very valuable for constantly improving Artweek processes. Many others among our regular volunteers helped out in countless ways, and deserve our thanks, too.

Again this year we received generous support from Selwyn District Council's Event Fund for printing the catalogue, hiring the Darfield Recreation Centre, and buying publicity.

Darfield Artweek encourages the creative efforts of artists at all levels of accomplishment by giving them an opportunity to exhibit their work to artists, friends, and the general public, who come specifically to experience an art exhibition. This year we exhibited 356 works from 145 artists who create a wide range of art—carving, jewellery, metal work, photography, pottery, textile and fabric art, weaving, multi-media, and paintings in oil, acrylic, and watercolour. The showing of these works validates the creation of art as a means of self-expression in a wide variety of themes, styles, and mediums: the judging confirms the creative talent of participating artists; and the exhibition also provides a marketplace for the work of artists at all levels of skill and experience.

A comparison between the past two years illustrates the desire of the artistic community and the general public in 2020 to take advantage of their freedom and relative safety from community transmission of the virus, while the general uncertainty in 2021 regarding the introduction of the government’s proposed “traffic light restrictions” seemed to depress the economic mood.

<b>Artweek comparisons</b>	<b>2021</b>	<b>2020</b>
Attendance	858	1200
Sales	62 works	83 works
Average price	\$324	\$367
Total value	\$20,099	\$30,521
Benefitting	40 artists	53 artists
Average profit	\$502	\$576

The Malvern Community Arts Council retained a 25% commission on Artweek sales, approximately \$5,000. This money is vital to the operation of MCAC’s art gallery, Te Huanui.

Our visitor surveys from Darfield Artweek show that the community also benefits from our exhibitions:

- approximately 40% of the people who visit Artweek have not come previously,

**The Buddle Finlay Award, Artweek 2021**



*“Playtime 2” Annika Maenpaa*

*“Inspired use of digital technology. The work is striking in its simplified form and colour. As a work of art it captures the right balance of proportions and drawing technique. It’s also whimsical and fun.” (Shirin Khosraviani, Artweek Judge 2021)*



**The Selwyn Creative Network Award, Artweek  
2021**

*"Window to the Soul" Justine Woosnam*

*"This small work was competing with another one for my attention, but on closer inspection it became clear that it was an outstanding piece deserving of recognition. It has excellent formal qualities and the artist has perfect control over her chosen medium."*

*(Shirin Khosraviani, Artweek Judge 2021)*

- similarly, 40% of our Artweek visitors take advantage of one of the food outlets in Darfield,
  - almost 20% visit relatives or friends in conjunction with a visit to Artweek.
- Our annual community exhibition also benefits Te Huanui gallery: more than a third of Artweek's visitors also stop at the gallery to see the exhibition there.

## MCAC Administrator

The Malvern Community Arts Council's current Arts Administrator, **Katrina Ellis**, has been working for us part-time (15 hours/week) since March 2018. She is particularly skilled at customer relations and networking, graphic design and social media use. She has created online exhibitions during gallery closures, increasing artist exposure and facilitating sales.



The Arts Administrator is often the first public face of Te Huanui Art Gallery in Darfield for artists who are considering exhibiting with us. She is personable, and as an artist herself, understands an artist's perspective on exhibiting, commissions, and generally "doing business". A part-time employed Arts Administrator relieves MCAC of the need to find capable volunteers who can handle skilled advertising, administrative, logistical, and customer relations work with the consistent level of expertise that maintains the public profile of the MCAC and Te Huanui. We are pleased

that her professional approach and continuity of service encourage artists to exhibit and sell works through us.

We continue to be very grateful for the generosity of the Rātā Foundation in supporting MCAC operations. Their February 2021 grant of \$8,000 enabled us to continue funding our Arts Administrator position through the 2021 calendar year.

It is important here to acknowledge all the work that our Treasurer, Alastair Nicol, does in relation to the Arts Administrator position, since he provides payroll and administrative support for it.

## Scholarships and Prizes

The MCAC Executive Committee decided to offer a different kind of award programme in 2021. We invited applications for ten grants of \$100 for first-time tuition “start up” allowances for Year 4 to 8 students inclusive. Applicants were asked to choose an arts discipline for which they were not currently receiving tuition, identify



### The Lumino the Dentist Award, Artweek 2021

*“Neuro Fern” Daniel Pye*

*“Intricate and detailed, this work evokes tranquility and the sense of wonder. I really enjoyed looking up and being underneath this piece. It was a nice change in perspective and it worked to calm me down and allowed me space to contemplate the chaos of my day. As an artwork, I appreciate the subtle detailing and refined aesthetics.”*

*(Shirin Khosraviani, Artweek Judge 2021)*



a teacher, the cost of the tuition and any materials, and course availability, with the expectation that they would continue the tuition for at least one term.

The sole applicant, **Patricia Galler**, was a Year Four student at Hororata Primary School. MCAC recognised her successful application on Friday, 16 July when Philip Baldwin presented her with a certificate at Te Huanui Art Gallery in Darfield. We were impressed with Patricia's hand-written application. She obviously took some time to prepare her application, and express her love of art and her desire to learn more about becoming a better artist.



The Executive Committee also gave two \$100 prizes to Darfield High School students for excellence in the Arts this year. The recipients of these prizes were:

### The SURVUS Award, Artweek 2021

*"Sentinels" Karin Werner*

*"This artist has a brilliant handle on light and capturing the mood of her subject matter. The work has presence without being overbearing. It shows off the artist's refined skill set and is a well-balanced composition."*

*(Shirin Khosraviani, Artweek Judge 2021)*

**Susanna Tully:** The Malvern Community Arts Council Trophy for Enthusiastic Participation in Cultural Activities - Years 7 and 8;



and

**Z'Arn Payne:** The Malvern Community Arts Council Prize for the Best Contribution to School Music.





## Health and Safety

Our Health and Safety policy, procedures, and documentation remain in place, because of the responsibility we have to care for the safety of our volunteers and committee members, as well as visitors to MCAC events and activities. We encourage all our committees and volunteers to continue to refer to the policy and report any issues which may arise.

## Privacy Act Compliance

In compliance with the Privacy Act (2020) and changes in the scope of our responsibilities for handling the information we hold on volunteers, artist members, and Friends of MCAC, we have communicated with the people in these groups, advising them that we hold personal and potentially sensitive information that they have a right to know about. The Privacy Act requires organisations to have at least one person who fulfils the role of Privacy Officer, and we are grateful to Judith Pascoe for taking on this position.

## Volunteers

We face the continuing challenge of recruiting more (and younger) volunteers and committee members for the Executive Committee, Te Huanui, and Darfield Artweek. These are community resources that are invaluable to the life of our district and our artist members. We are always on the lookout to recruit new members who have an appreciation for the arts and a desire to serve their community. I encourage you to help us find new volunteers to support and promote the arts in Malvern.



### The Tavendale & Partner Award

*"Free Spirit" Christine Maynard*

*I'm typically not very kind to abstract work, as, I must admit, I see a lot of them around. This work through, hit the right note with me.*

*It has a good balanced palette and the energetic gestures are perfectly layered. It holds together well and is a resolved work of art.*

*(Shirin Khosraviani, Artweek Judge 2021)*



**The Drawing Room Merit Award,  
Artweek 2021**

*"The Apple" Judy Kleis*  
*"This little drawing caught my eye instantly and I*  
*was drawn to its simple execution.*  
*It is compositionally strong, has great balance*  
*and is very absorbing."*  
*(Shirin Khosraviani, Artweek Judge 2021)*

**2021 Committees**

**Executive Committee**

Philip Baldwin Chairperson  
 Lana Coles Secretary  
 Alastair Nicol Treasurer  
 Nicola Hardy  
 Meg Morten  
 Kirsty Peel  
 Paul Rosanowski  
 Judith Pascoe Malvern Community Board  
 Representative

**Gallery Committee**

Meg Morten Chairperson  
 Philip Baldwin Secretary  
 Richard Hallows  
 Allan Harris  
 Lorraine Natusch

**Performing Arts Committee**

Melissa Jebson Chairperson  
 Philip Baldwin Secretary  
 Janet MacDougall  
 Sherlee Sadler  
 Janet Taege  
 Diane Woodward

**Artweek Committee**

Meg Morten Co-Chairperson  
 Robin MacIntosh Co-Chairperson  
 Philip Baldwin Secretary  
 Lorraine Natusch  
 Alastair Nicol  
 Sylvia Townshend

## Annual Accounts for the year Ending 31 December 2021

These accounts include five statements, namely

Accounting Policies  
Income and Expenditure  
Cash Flows  
Financial position  
Movement in Equity

Appended

Depreciation schedule

### Statement of Accounting Policies

1. These accounts have been prepared on a Cash basis and are GST exclusive.
2. Grants have been included as income in the year they were obtained
3. Existing fixed assets (over \$200) are depreciated on a SL basis at rates shown on the depreciation schedule.



Alastair Nicol  
Treasurer, MCAC  
28 January 2022

## Income and Expenditure Account

for year ending 31 December 2021

### INCOME

Source	\$	Notes	2020
Commission on sales	15,080.01		16,279
Grants	15,495.74		15,256
Fees	8,271.03		8,431
Government Wage Subsidy		1	4,200
Sponsorships	5,643.47		3,352
Ticket sales	2,531.75		3,217
Donations	3,707.62		2,463
Other (postage refunds etc)	70.41		170
Hire (Screens, artwork)	460.87		157
Interest (Current account)	12.93		73.78
Book, Calendar sales	1,073.40	2	70
<b>Total</b>	<b>\$52,347.23</b>		<b>53,669</b>
Add interest and unit value accrued	\$105.50	3	
<b>Net income</b>	<b>\$52,452.73</b>		<b>\$1,142.96</b>
<b>Surplus/deficit for year</b>	<b>\$1,142.96</b>		

### EXPENDITURE

Source	Notes	\$	2020
Personnel		17160.64	16066
Function costs		8737.90	5657
Advertising		3014.86	5636
Awards/Prizes		7300.00	9475
Hire (Artweek)	4	3221.74	
Overheads		5296.05	5045
Gallery Supplies		833.18	640
Printing/Stationery		583.80	722
Administration		1823.33	1605
Artweek Supplies		865.56	962
Artists payment 2020	5	522.50	
Books/Calendars		610.74	341
R+M		734.09	483
MCAC Art purchases		331.47	328
Rebates/refunds		273.91	
Other			60
<b>Trading Expenses</b>		<b>\$51,309.77</b>	<b>47021</b>

- Notes:**
- 1 Not applied for in 2021
  - 2 Restocking of books (Deans and Dillon)
  - 3 Reflects low interest and FF fall in unit value
  - 4 Policy change by SDC, increase in Red Centre hire
  - 5 Apportioning of unallocated 2020 income

**Statement of Cash Flows**  
for year ending 31 December 2021

**Current Account (Kiwibank No 1)**

<b>Opening bank balance 1 Jan 2021</b>			<b>\$14,093.57</b>
Less liabilities from 2020	2021 GST payment		\$1,744.12
Add 2021 Income	Trading	\$52,347.23	
	Net GST	\$1,135.35	
			\$53,482.58
Less 2020 Expenditure	Payments	\$51,309.77	
			\$51,309.77
<b>Closing Balance 31 Dec 2021</b>			<b>\$14,522.25</b>

**Working Capital Account (Kiwibank No 2)**

<b>Opening bank balance 1 Jan 2021</b>		<b>\$27,324.37</b>
	Deposit from Current Ac	\$82.11
	Interest	\$82.11
<b>Closing balance 31 Dec 2021</b>		<b>\$27,406.48</b>

**Statement of Cash Flows**  
for year ending 31 December 2021

**Building Development Fund**

<b>Kiwibank Term Deposit</b>	
Opening bank balance 1 Jan 2021	\$10,000.00
Deposit	
Interest	\$90.25
Closing balance 31 Dec 2021	\$10,090.25
<b>Heartland Term Deposit</b>	
Opening bank balance 1 Jan 2021	\$29,348.50
Deposit	
Interest	
Closing balance 31 Dec 2021	\$29,348.50
<b>Fisher Funds High Income Account</b>	
Opening balance 1 Jan 2021	\$60,348.64
Gain in unit value	-\$628.13
Closing balance 31 Dec 2021	\$59,720.51
<b>Total</b>	<b>\$99,159.26</b>

**Malvern Business Merit Award, Artweek 2021**



*“Wedding Cake Knife” Andrew Lyons*  
*“Well-crafted and finished object which carries the potential for warm sentimentality. It has a beautiful finish and treatment. Very interesting use of scale.”*  
*(Shirin Khosraviani, Artweek Judge 2021)*

## Financial Position as at 31 December 2021

2020		2021
	<b>Assets</b>	
	Working Accounts	
	Current	\$14,522.25
	No 2	\$27,406.48
\$41,417.94		\$41,928.73
	Building Development Funds	
	Kiwibank	\$10,090.25
	Heartland Bank	\$29,348.50
	Fisher Funds HI	\$59,720.51
\$99,135.87		\$99,159.26
\$100.00	Fixed Assets (as per depreciation Schedule)	\$100.00
\$140,653.81	<b>Total Assets</b>	<b>\$141,187.99</b>
	<b>Deduct Liabilities</b>	
\$1,744.12	GST to pay Jul-Dec 2021	\$1,135.35
		\$1,135.35
<b>\$138,909.69</b>	<b>Net worth (Equity)</b>	<b>\$140,052.64</b>
	<b>Change</b>	<b>\$1,142.95</b>
	<b>Accounted for by</b>	
	Depreciation	\$0.00
	Surplus/deficit for year	\$1,142.96
		<b>\$1,142.96</b>



### Malvern Business Merit Award, Artweek 2021

*"Stitch Mandalas" Brenda Visser*

*"This work has meticulous design and has been created with care. The artist employed good use of colour and form."*

*(Shirin Khosraviani, Artweek Judge 2021)*

Schedule of Fixed Assets & Depreciation  
1for Year Ending 31 December 2021

Date of Acquisition	Description	Original Cost (\$)	Depreciation to 1 Jan 2020	Book Value for SL (2016)	Book Value 1-Jan-20	Additions (Disposals)	Gain/Loss on Disposals	Current Years Depreciation Rate % SL	Current Years Depreciation Amount (\$)	Months	Total Depreciation	Book Value at 31 Dec 2020
	Giant Weta(On permanent loan i	100.00		100.00	100.00				-	-	-	100.00
	Screens	47.32	47.32	236.62	0.00			20		12	47.32	-
	Screens Upgrade	15.61	15.61	78.05	0.00			20		12	15.61	-
	1998 Exhibition Boxes	11.30	11.30	56.49	0.00			20		12	11.30	-
	1997 Signs- Art Exhibition	-	-	88.23	0.00			25		12	-	-
	1998 Piano & Castors	210.00	210.00	1,049.99	0.00			20		12	210.00	-
	1998 Lights & Fittings	6.55	6.55	32.75	0.00			20		12	6.55	-
	8/13/1999 Lights & Fittings	2.72	2.72	13.62	0.00			20		12	2.72	-
	1998 Sign	-	-	76.27	0.00			25		12	-	-
	1998 Blinds	3.33	3.33	16.67	0.00			20		12	3.33	-
	1998 Screens (Gallery)	7.22	7.22	36.10	0.00			20		12	7.22	-
	10/31/1999 Seat	-	-	7.30	0.00			25		12	-	-
	9/27/2000 Street Flags (SDC)	-	-	6.18	0.00			25		12	-	-
	8/2/2001 Gallery Wall Panels	50.82	50.82	254.12	0.00			20		12	50.82	-
	8/2/2001 Err:540	6.74	6.74	33.68	0.00			20		12	6.74	-
	9/13/2001 Guillotine	4.10	4.10	20.48	0.00			20		12	4.10	-
	9/17/2001 Vacuum Cleaner	-	-	4.74	0.00			25		12	-	-
	11/20/2001 Sign - Gallery- Exhibition	-	-	254.65	0.00			25		12	-	-
	11/20/2001 Sign - Art Week	-	-	74.36	0.00			25		12	-	-
	4/20/2005 C D Player	-	-	23.28	0.00			25		12	-	-
	8/17/2005 Fridge	4.43	4.43	22.16	0.00			20		12	4.43	-
	11/24/2005 Screens & Fittings	35.38	35.38	176.88	0.00			20		12	35.38	-
	11/24/2005 Gallery Signs	-	-	377.26	0.00			25		12	-	-
	9/25/2006 Leasehold Improvements	1,040.59	1,040.59	5,202.95	0.00			20		12	1,040.59	-
	10/22/2006 New Screens	482.23	482.23	2,411.15	0.00			20		12	482.23	-
	12/20/2006 Leasehold Improvements	2,142.83	2,142.83	10,714.17	0.00			20		12	2,142.83	-
	2/20/2007 Heat Pump & installation	159.62	159.62	798.08	0.00			20		12	159.62	-
	3/1/2007 Carpet	-	-	14.80	0.00			25		12	-	-
	3/1/2007 Leasehold Improvements	344.88	344.88	1,724.39	0.00			20		12	344.88	-
	5/20/2007 Leasehold Improvements	376.02	376.02	1,880.12	0.00			20		12	376.02	-
	5/20/2007 Cupboard for printer	49.05	49.05	245.23	0.00			20		12	49.05	-
	2/19/2008 Jewellery Case	12.36	12.36	61.79	0.00			20		12	12.36	-
	9/19/2008 Blind	11.26	11.26	56.32	0.00			20		12	11.26	-
	6/19/2009 Plinths	47.66	47.66	238.28	0.00			20		12	47.66	-
	11/20/2009 Screens	535.60	535.60	2,677.98	0.00			20		12	535.60	-
	12/18/2009 Epson Printer	-	-	19.84	0.00			25		12	-	-
	10/20/2010 Gallery Flag	18.99	18.99	94.96	0.00			20		12	18.99	-
	6/8/2014 Screens 2014 (3)	289.61	377.14	1,448.06	0.00			20		12	377.14	-
	10/10/2015 Container	434.78		2,173.91	0.00			20		12	-	-
<b>Total</b>		<b>\$6,451.00</b>	<b>\$6,003.75</b>	<b>32,801.91</b>	<b>\$100.00</b>	<b>\$0.00</b>	<b>\$0.00</b>		<b>\$0.00</b>		<b>\$6,003.75</b>	<b>\$100.00</b>



Assets paid for from Income (for the record)

Chairs	127.86
Display Board	48.67
20 x Chairs	135.85
Corkscrew	7.99
Kettle	35.55
Clock	16.10
2 x Dishwasher Racks	70.00
2002 Filing Cabinet	142.22
2003 6 x Mugs	29.33
Trestle Table	88.00
2 x Platters	24.16
Fire Extinguisher	149.00
2004 4 Spotlights	44.44
2010 3 Chair Covers	91.86
2013 Eftpos Terminal	1,057.00
2014 Alarm System	1,704.00
Easel	150.00
2016 Donation Box	434.78
2017 Carpet	6,585.00
<b>Total</b>	<b>10,941.81</b>



**Malvern Business Merit Award, Artweek 2021**

*"The New Home" Jessica Waters*

*"This sweet little work caught me by surprise. The level of detail was well-suited to the subject matter, and I appreciated the skilled use of the media."*

*(Shirin Khosraviani, Artweek Judge 2021)*

## Cash Flow 1 January 2021 – 31 December 2021

Current Account	Jan	Feb	Mar	Apr	May	Jun	July	August	September	October	November	December	YTD
<b>Opening balance</b>	\$14,093.57	\$11,401.33	\$20,702.88	\$13,843.54	\$14,209.43	\$14,219.54	\$19,134.86	\$17,693.26	\$19,799.57	\$24,096.23	\$35,591.74	\$21,842.81	
<b>Income</b>													
Commission on sales													
Exhibitions	291.25	843.15		221.73	116.25	83.75	276.25	312.50	532.50	3076.25	346.25	108.75	6208.63
Gallery 2	152.27	143.94	350.23	279.51	455.56	441.84	310.30	353.55	19.31	770.00	314.50	280.88	3871.88
Artweek										4999.50			4999.50
Fees													
Artweek							121.74	147.83	3256.52	491.30			4017.39
Exhibitions	195.00	339.96	184.01	0.00	326.09	125.00	0.00				1063.75		2233.81
Artists subs		140.00	805.00	454.83	245.00	175.00	105.00		35.00	35.00		25.00	2019.83
Ticket sales													
Artweek									1327.40	43.48			1370.88
Pottery Workshop					273.91								273.91
K Smith					886.96								886.96
Donations													
Friends				350.00									350.00
Door		11.14			139.32		56.00	184.91				308.05	699.42
Artweek								750.00	500.00	1408.20			2658.20
													0.00
Sponsorship/Grants													0.00
Artweek							300.00	1613.04	2500.00	1230.43			5643.47
Creative Communities				1061.74		1365.00			829.00				3255.74
SDC Event Fund						5000.00							5000.00
Rata		8000.00											8000.00
Other income													
Deans			86.96	43.48	43.48		86.96	86.96			86.96		434.80
Dillon				103.85	104.34		52.17	52.17		52.17	52.17		416.87
Calendars										143.47	56.52	21.74	221.73
Facility hire			460.87										460.87
Overpayment													
Other	27.91	47.32	3.7	86.67			117.56		0.00	71.25	16.00		370.41
													0.00
Interest TD	0.59	0.55	0.77	0.60	0.61	0.80	0.80	0.84	0.80	2.44	2.49	1.64	12.93
Curren Bank													
<b>Total</b>	<b>\$667.02</b>	<b>\$9,526.06</b>	<b>\$1,891.54</b>	<b>\$2,602.41</b>	<b>\$2,591.52</b>	<b>\$7,191.39</b>	<b>\$1,426.78</b>	<b>\$3,501.80</b>	<b>\$9,000.53</b>	<b>\$12,323.49</b>	<b>\$1,938.64</b>	<b>\$746.06</b>	<b>\$53,407.23</b>

<b>Expenditure</b>	<b>Jan</b>	<b>Feb</b>	<b>Mar</b>	<b>Apr</b>	<b>May</b>	<b>June</b>	<b>July</b>	<b>August</b>	<b>September</b>	<b>October</b>	<b>November</b>	<b>December</b>	<b>YTD</b>
<b>Advertising</b>													
Artweek					213.91				361.52	270.00	135.00	340.00	1106.52
Exhibitions	39.13	138.26						323.48					714.78
Events						313.04							313.04
General				312.13								568.39	880.52
<b>Printing, Stationery</b>													
Artweek										583.80			583.80
<b>Hire charges</b>													
Artweek											3221.74		3221.74
<b>Events costs</b>													
Artweek	1353.27		869.57					180.00		1652.52	127.91	2221.04	6404.31
Events					945.00								945.00
Openings		28.96	69.57	28.96	28.96	104.54	219.13	137.54					617.66
Special Exhibitions		70.45		173.91									244.36
Volunteers			59.50	40.48	40.48		108.72						249.18
<b>Books</b>													
Dillon Deans			156.50	312.99				141.25					610.74
<b>Other expenses</b>													
Gallery supplies	263.36	17.30	25.22	216.50		8.61		185.16			117.03		833.18
Artweek supplies									103.07	340.90	321.59	100.00	865.56
Subs													
MCAC vouchers redeemed													
Events							217.39			60.00			277.39
Refunds				173.91					30.00	370.00		760.00	1333.91
<b>Overheads</b>													
Administration			178.26	284.34	69.57	100.00		44.44	0.00	4.35			680.96
Power	79.32	76.18	0.00	104.37	102.45	136.78	151.28	143.97	119.11	93.99	147.96	134.14	1289.55
Telephone	83.86	84.88	93.24	0.00	123.64	92.56	92.06	88.94	90.49	87.38	92.44	92.21	1021.70
Website			357.93						184.50				542.43
Eftpos	50.70	48.65	77.45	41.35	48.03	57.11	56.48	51.35	44.66	37.62	36.00	50.54	599.94
PO Box													
Rates/Insurance/ACC			1711.94						1272.86				2984.80
R+M			306.08								428.01		734.09
Bank fees & charges													
<b>Personnel</b>													
Arts Administator	531.21	1068.70	2282.13	1019.01	1253.33	1019.01	1253.33	1019.01	1019.01	1733.70	1019.01	1019.01	14236.46
PAYE	289.06	232.81	209.51	0.00	291.67		508.66	216.99	296.75		661.74	216.99	2924.18
<b>Awards, Prizes, Scholarships</b>													
Artweek										7000.00			7000.00
DHS										100.00	100.00		200.00
Events													
Sheffield A&P													
Scholarships							100.00						100.00
<b>Total</b>	<b>\$2,689.91</b>	<b>\$1,766.19</b>	<b>\$6,396.90</b>	<b>\$2,707.95</b>	<b>\$3,117.04</b>	<b>\$1,831.65</b>	<b>\$2,707.05</b>	<b>\$2,532.13</b>	<b>\$3,521.97</b>	<b>\$12,334.26</b>	<b>\$6,408.43</b>	<b>\$5,502.32</b>	<b>\$51,515.80</b>



**Malvern Business Merit Award, Artweek 2021**

*“Daisy Chain” Angus Goodwin*

*“I admired the workmanship and the ability of this artist. The design of this piece, along with the pairing of pearl and silver really held together.*

*It’s charming and I’m sure will be beautiful to wear.”*

*(Shirin Khosraviani, Artweek Judge 2021)*

	Jan	Feb	Mar	Apr	May	Jun	July	August	September	October	November	December	YTD
<i>Surplus/Deficit excluding transfers</i>	-\$2,022.89	\$7,759.87	-\$4,505.36	-\$105.54	-\$525.52	\$5,359.74	-\$1,280.28	\$969.67	\$5,478.56	-\$10.77	-\$4,469.79	-\$4,756.26	\$1,891.43
<b>Adjustments for items not income or expenditure</b>													
	Jan	Feb	Mar	Apr	May	Jun	July	August	September	October	November	December	YTD
Net payments to artists	1255.25	1391.32	-2051.27	389.46	403.67	-446.36	-294.26	946.12	-1980.23	10349.60	-8713.45	-2103.82	-853.97
GST from 2021	-1744.12												-1744.12
GST payment/recovery							116.95						116.95
Net GST for month	-180.47	150.36	-302.71	81.97	131.96	1.94	15.98	190.52	798.33	1156.68	-565.69	-460.48	1018.39
Account transfers													
To/from 01 account													
To/from Kiwi TD													
To Heartland Term Deposit													
Closing current account ba	\$11,401.33	\$20,702.88	\$13,843.54	\$14,209.43	\$14,219.54	\$19,134.86	\$17,693.26	\$19,799.57	\$24,096.23	\$35,591.74	\$21,842.81	\$14,522.25	\$14,522.25
<b>Working Capital Account</b>													
<b>KiwiBank No 01 Account</b>													
Opening Balance	\$27,324.37	\$27,324.37	\$27,337.60	\$27,343.44	\$27,349.05	\$27,354.85	\$27,354.85	\$27,354.85	\$27,354.85	\$27,354.85	\$27,354.85	\$27,394.82	
Interest		13.23	5.84	5.61	5.80						\$39.97	11.66	82.11
Transfer to/from No 00 Ac													
Deposit													
Closing Balance	\$27,324.37	\$27,337.60	\$27,343.44	\$27,349.05	\$27,354.85	\$27,354.85	\$27,354.85	\$27,354.85	\$27,354.85	\$27,354.85	\$27,394.82	\$27,406.48	
<b>Building Development Ac</b>													
	Jan	Feb	Mar	Apr	May	Jun	Jul	Aug	Sep	Oct	November	December	
<b>KiwiBank No 03 Account -Term Deposit</b>													
Opening Balance	\$10,000.00	\$10,000.00	\$10,000.00	\$10,000.00	\$10,000.00	\$10,000.00	\$10,000.00	\$10,000.00	\$10,000.00	\$10,000.00	\$10,000.00	\$10,090.25	
Deposit													
Interest											\$90.25		90.25
Transfer to/from No 00 Ac													
Closing Balance	\$10,000.00	\$10,000.00	\$10,000.00	\$10,000.00	\$10,000.00	\$10,000.00	\$10,000.00	\$10,000.00	\$10,000.00	\$10,000.00	\$10,090.25	\$10,090.25	
<b>Fisher Funds High Income Account</b>													
Opening Balance	\$60,348.64	\$60,348.64	\$60,348.64	\$60,348.64	\$60,348.64	\$60,096.31	\$60,096.31	\$60,096.31	\$60,096.31	\$60,139.26	\$60,139.26	\$60,139.26	
Add													
Change in unit value					-\$252.33				\$42.95			-\$418.75	-628.13
Closing balance	\$60,348.64	\$60,348.64	\$60,348.64	\$60,348.64	\$60,096.31	\$60,096.31	\$60,096.31	\$60,096.31	\$60,139.26	\$60,139.26	\$60,139.26	\$59,720.51	
<b>Heartland Term Deposit</b>													
Opening Balance	\$28,787.23	\$28,787.23	\$28,787.23	\$28,993.07	\$28,993.07	\$29,163.53	\$29,163.53	\$29,163.53	\$29,163.53	\$29,264.90	\$29,264.90	\$29,348.50	
Deposit													
Interest			\$205.84		170.46				101.37		83.60		561.27
Closing Balance	\$28,787.23	\$28,787.23	\$28,993.07	\$28,993.07	\$29,163.53	\$29,163.53	\$29,163.53	\$29,163.53	\$29,264.90	\$29,264.90	\$29,348.50	\$29,348.50	
<b>Total</b>	<b>\$99,135.87</b>	<b>\$99,135.87</b>	<b>\$99,341.71</b>	<b>\$99,341.71</b>	<b>\$99,259.84</b>	<b>\$99,259.84</b>	<b>\$99,259.84</b>	<b>\$99,259.84</b>	<b>\$99,404.16</b>	<b>\$99,404.16</b>	<b>\$99,578.01</b>	<b>\$99,159.26</b>	

	Jan	Feb	Mar	Apr	May	Jun	July	August	September	October	November	December	YTD
<b>Figures of interest outside of accounts</b>													
Exhibition sales													
Exhibitions	1165.00	3424.00		713.00	335.00	335.00	505.00	1250.00	2130.00	12305.00	1385.00	435.00	23982.00
Gallery 2	609.00	576.00	1356.00	1139.00	1663.00	1663.00	1032.50	1190.00	95.00	3080.00	1258.00	1133.00	14794.50
Artweek										19998.00			19998.00

**Malvern Business Merit Award, Artweek 2021**



*"Calm" Neela Curran*

*"A little gem that packs a punch. Excellent control of colour and the watercolour medium."*

*(Shirin Khosraviani, Artweek Judge 2021)*

**MCAC Bob Gillard Youth Category Awards, Artweek 2021**

*"Mystical Meadow" Ainsley Worling*

*A wonderful work full of details to attract the eye.  
Its whimsy and charm really warmed my heart.*



*"Through the Lindis" Ella Stephens*

*I responded instantly to this work.  
It has fantastic painterly techniques and great composition.*

*(Simone Barnsdale, Artweek Youth Judge 2021)*